



FIRST REALTY



First Realty makes no warranty, expressed or implied as to the accuracy of the information on this sheet.

Signs

www.effinghamhomesearch.com

Phone 217-342-2775

OWNER: Effingham State Bank Trust 1852

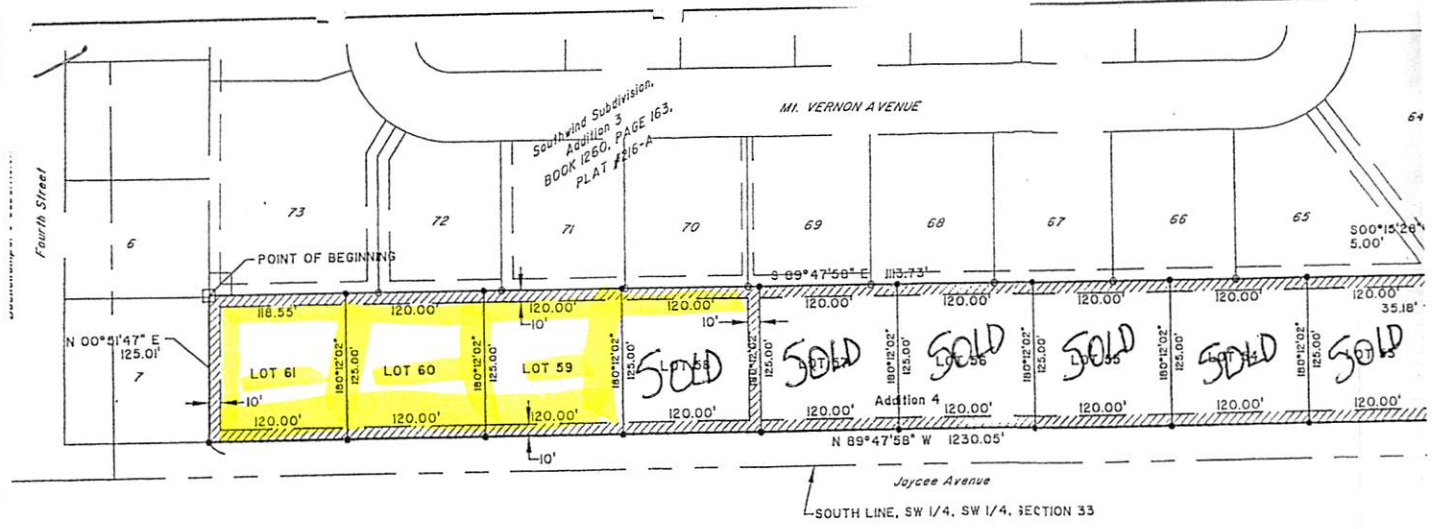
PRICE: \$19,900 each

PROPERTY ADDRESS: Southwind Subd. Jaycee Ave lots # 59-60 & 61

TYPE: Building lots

LOT SIZE: see plat

Lot 59 Tax: \$36.26
Lot 60 \$36.26
Lot 61 \$36.26



LEGAL DESCRIPTION

A part of the Southwest Quarter Range 6 East, of the Third Principal Meridian, as follows:
Beginning at the Southwest corner of Book 1260, Page 163, Plat monument:
Thence, S 89° 47' 58" E, to Addition 3, a distance of 113.73 feet;
Thence, S 00° 15' 28" W, to Addition 3, a distance of 5.00 feet, to an iron pin;
Thence, S 89° 47' 58" E, to an iron pin;
Thence, S 00° 15' 28" W, along the Right-of-Way line of Jaycee Avenue, a distance of 1230.05 feet, to an iron pin;
Thence, N 89° 47' 58" W, a distance of 1230.05 feet, to an iron pin;
Thence, N 00° 51' 47" E, a distance of 125.01 feet, to an iron pin;
Thence, N 00° 51' 47" E, a distance of 3.51 acres more or less.



State of Illinois
County of Effingham
Professional Surveyor
Charles A. Cranley
2015
Survey No. 1852-1853
Surveyed and Platted 11/14/2015